



KM-K

Multi-solvent

Dry Cleaning Machines designed for use with the popular Class III A alternative solvents, including:

Hydrocarbon

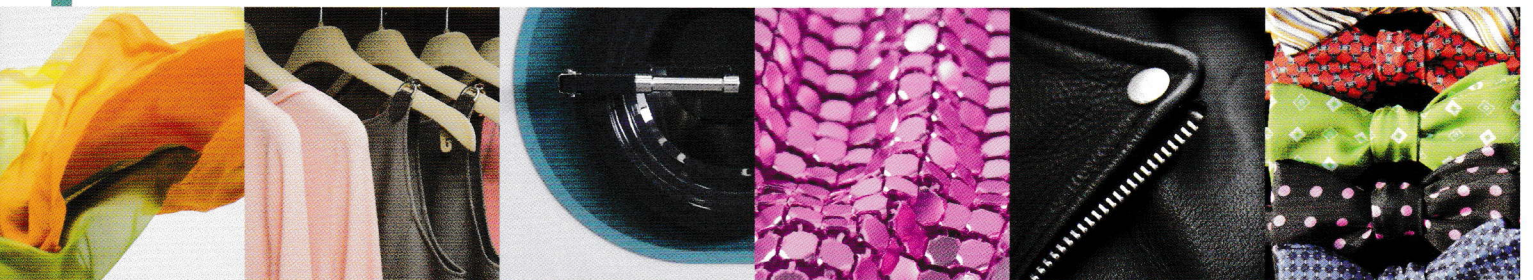
Silicon (Green Earth)

Solvon K4 by KREUSSLER

K-Text by BARDAHL

GENEX

Realstar... Leading the World in Technology
for Alternative Solvent Dry Cleaning Machines



REALSTAR

Dry-Cleaning Solutions

Realstar

Three challenges must be met when designing a machine for operation in a dry cleaning plant today:

1. It must be safe for the operator
2. It must meet or exceed all governmental rules and regulations, domestic US, European and International
3. It must be easy to use!

REALSTAR engineers have designed modern alternative Multi-solvent machines that meet the above requirements for use with any Class III A solvents such as Hydrocarbon with flashpoint of 56 degree C. (132.8 F), Silicone (GREEN EARTH), Solvon K4 by KREUSSLER, K-TEX by BARDAHL and GENEX.

KM-K 215 / 315



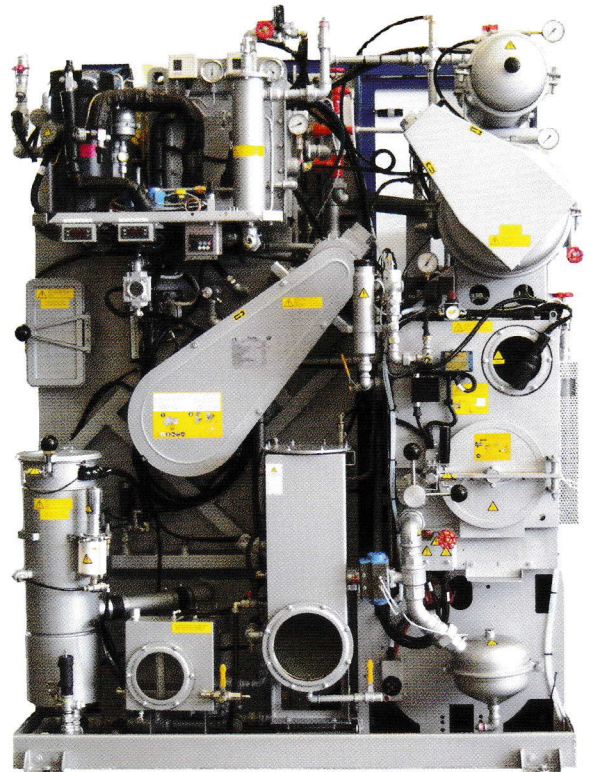
KM-K 215

Load capacity of 15 Kg
(35 Lbs)
Two tanks



KM-K 315

Load capacity of 15 Kg
(35 Lbs)
Three tanks



PULSAR D601 with COMBI System

The most advanced control system found on any dry cleaning machine today. The **REALSTAR Pulsar D601 with COMBI System** makes available 20 different programs for both operation as well as maintenance of the machine. It is easily self programmable by the operator and allows any portion of any program to be modified at any time. A memory card feature makes it very easy to transfer identical programs to other machines. Manual machine operations are permitted as well.

r is the choice of profes

REALSTAR alternative Multi-solvent Dry Cleaning machines are available in both two tank and three tank designs.

Additionally, narrow slim line configurations are available to accommodate space restrictions.

Experienced Professional dry cleaners have learned they can trust **REALSTAR** Alternative Solvent machine technology and design to deliver the finest possible cleaning results with Class III A solvents.

Clean garments with a soft hand feel, the REALSTAR promise!

KM-K 218 / 225 / 318 / 325



KM-K 218

Load capacity of 18 Kg (40 Lbs)

Two tanks



KM-K 318

Load capacity of 15 Kg (35 Lbs)

Three tanks

KM-K 225

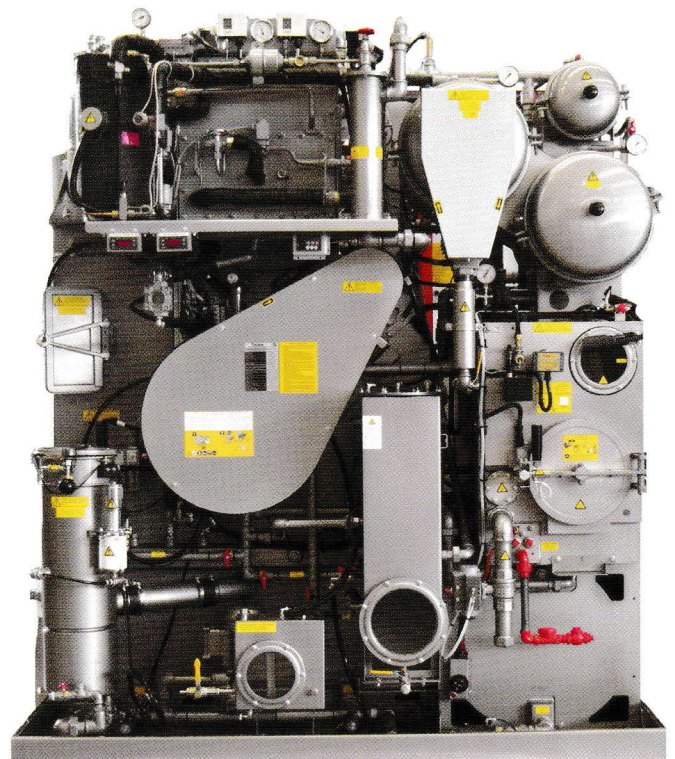
Load capacity of 25 Kg (55÷60 Lbs)

Two tanks

KM-K 325

Load capacity of 25 Kg (55÷60 Lbs)

Three tanks



REALSTAR Pulsar D601 with COMBI System, allows the operator to preset drying temperatures, both inlet and outlet, solvent temperatures, machine motor speeds, and dosing pump operations, "set it and forget it"! Its diagnostics capability makes it easy to solve any problems and keep machine down time to a minimum.

With the **Pulsar D601 with COMBI System by REALSTAR**, the future is here today. It is simply the best control system to be found in our industry.

STAINLESS STEEL Components

- Still
- Still Condenser
- Button Trap
- Water Separator
- Supplementary water separator
- Solvent filter canisters
- Basket
- Drying Tunnel

The best choice for your business!

Standard features:

- Self-cleaning round tanks
- Steam or Electric Heating
- Floor guard Solvent safety tray
- Air-operated interlocks and micro-switches on all doors
- INVERTER drive wash motor
- Electronic and self-cleaning Dry Control
- Supplementary Water Separator
- Automatic Soap Pump
- Fractional distillation
- Back plate cleaning design
- Quick connect nitrogen safety system
- Nitrogen bottle (not supplied)
- Microprocessor control system, self-programmable, 14 languages
- Continuous distillation if desired
- Electronic temperatures control
- Sight glasses on water separator
- Oversized loading door
- Automatic still wall cleaning
- Still sight glass illuminated
- Double air lint filter
- Electro-steam still system (only in Electric Heating Version)
- Automatic button trap drying

Additional standard features only for NORTH AMERICAN MARKET:

- Solvent filtration V 110 (Dual Spin Filter with All carbon filter with Dual Cartridge filter KR)
- Steam Heated
- Water Solvent cooling system

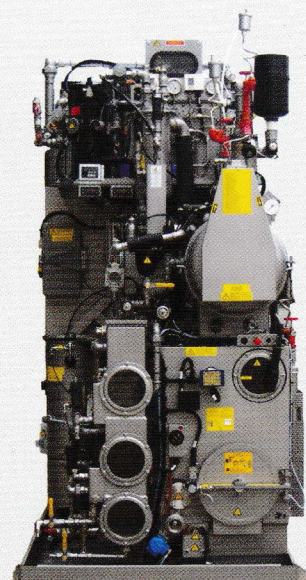
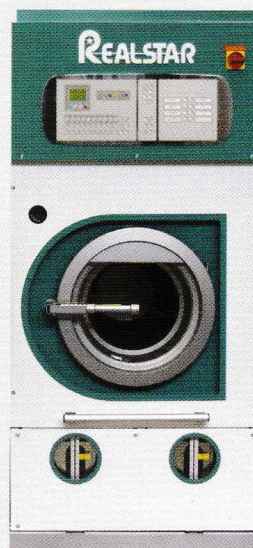
Available options on demand:

- Automatic still Pump clean out system
- Still rake
- External storage tank for still residue with connections kit
- Built in air compressor (not available for North American Market)
- POLAR SYSTEM Refrigerated solvent cooling system with FREON
- WATER SOLVENT COOLING SYSTEM
- Steam Traps (standard for North American Market)
- Automatic Start/Stop steam supply to the still
- LED DOOR Lighting system
- Nebulizer for additives
- Water Proofing system
- 2nd Automatic soap pump
- Self-Cleaning lint filter
- JET SOLVENT cleaning system

Additional options only for NORTH AMERICAN MARKET:

- Solvent filtration V 140 (Dual Spin Filters with Dual all carbon filters)
- Electric Heated

For space problems,
narrow, two tank KT models
are available in Slim Line
configuration



Experience and Technology a legacy of excellence!



Since the 1980's **REALSTAR** has been an innovative leader in the manufacturing of dry cleaning machines for the garment care industry.

Our commitment to research and development has resulted in machines recognized throughout the world for their highest standards of quality control, cutting edge technology, and compliance with rigid environmental regulations.

REALSTAR dry cleaning machines are manufactured in the world's most up to date and modern factories located in Bologna, Italy. Our commitment to quality control is second to none.

Every step of the manufacturing process is closely monitored to assure that the highest tolerances are met and exceeded.

Only top quality materials and components are used.

The utilization of lasers for precision metal cutting and robots for welding ensure the machines you invest in today will provide years of trouble free service.

REALSTAR builds machines designed for use with all of the popular solvents used in the garment care industry.

These machines are available in a wide range of sizes and configurations; all designed to comply with governmental and environmental regulations.

We offer machines that will meet the needs of the largest production facilities as well as the smaller single plants.

Most importantly to you, we stand behind our products.

**We know your success is our success!
This is the philosophy upon which we have
built our business**



KM-K

		KM215	KM218	KM225	KM315	KM318	KM325		KM215	KM218	KM225	KM315	KM318	KM325	
LOAD CAPACITY (Ratio 1:20)		Kg	15	18	25	15	18	25	Lbs	35	40	55-60	35	40	55-60
BASKET															
Volume	lt	285	340	500	285	340	500	cu.ft.	10,1	12	17,7	10,1	12	17,7	
Diameter	mm	800	900	1000	800	900	1000	inches	31,5	35,5	39,4	31,5	35,5	39,4	
Depth	mm	560	535	640	560	535	640	inches	22	21	25,2	22	21	25,2	
Wash speed	rpm	20÷55	20÷50	20÷50	20÷55	20÷50	20÷50	rpm	20÷50	20÷50	20÷50	20÷50	20÷50	20÷50	
Extract speed	rpm	300÷500	300÷520	300÷520	300÷500	300÷520	300÷520	rpm	300÷500	300÷520	300÷520	300÷500	300÷520	300÷520	
Door opening	mm	500	500	500	500	500	500	inches	20	20	20	20	20	20	
TANKS															
Useful volume tank 1	lt	105	118	145	105	118	145	gal	28	31	38	28	31	38	
Useful volume tank 2	lt	105	118	145	105	118	145	gal	28	31	38	28	31	38	
Useful volume tank 3	lt	-	-	-	120	160	195	gal	-	-	-	32	42	52	
STILL															
Useful Still Volume at half inspection	lt	145	145	190	145	145	190	gal	38	38	50	38	38	50	
Total Still Volume	lt	180	180	230	180	180	230	gal	47	47	61	47	47	61	
NYLON FILTER															
Volume nylon filter housing	lt	35	55	55	35	55	55	gal	9,2	14,5	14,5	9,2	14,5	14,5	
Nylon filter area	mt ²	2,1	3,9	3,9	2,1	3,9	3,9	ft ²	22,6	42	1	22,6	42	1	
Filter disks	nr	14	26	26	14	26	26	nr	14	26	2	14	26	2	
PURITAN FILTER															
Volume Puritan filter housing	lt	13	13	25	13	13	25	gal	3,4	3,4	3,4	3,4	3,4	3,4	
Tubes numbers	nr	1	1	1	1	1	1	nr	1	1	1	1	1	1	
Cartridges quantity	nr	1	2	2	1	1	2	nr	1	1	2	1	1	2	
DUAL CARTRIDGE FILTER															
Volume Dual cartridge filter housing	lt	35	55	55	35	55	55	gal	9,2	14,5	14,5	9,2	14,5	14,5	
Tubes numbers	nr	1	1	1	1	1	1	nr	1	1	1	1	1	1	
Cartridges quantity	nr	1	1	2	1	1	2	nr	1	2	2	1	2	2	
ELECTRIC POWER															
		400V 3ph 50Hz						220V 3ph 60Hz							
Working power (ELECTRIC Machine)	Kw	17	25,5	33	17	25,5	33	Kw	17	26,5	30,5	17	26,5	30,5	
Maximum Amperage in ELECTRIC Version	Amps	32	47	55	32	47	55	Amps	60	74	100	60	74	100	
Working power (STEAM Machine)	Kw	6	7,5	8,5	6	7,5	8,5	Kw	6	8,5	9,5	6	8,5	9,5	
Maximum Amperage in STEAM Version	Amps	18	16	19	18	16	19	Amps	30	30	47	30	30	47	
* Wash/Extract motor (with Inverter)	Kw	3	3,5	5,5	3	3,5	5,5	Hp	4	4,7	7,5	4	4,7	7,5	
Solvent pump motor	Kw	0,55	0,75	0,75	0,55	0,75	0,75	Hp	0,75	1	1	0,75	1	1	
Fan motor (with Inverter)	Kw	1,5	1,5	1,5	1,5	1,5	1,5	Hp	2	3,5	3,5	2	3,5	3,5	
Refrigerator compressor	Kw	2,5	3,75	3,75	2,5	3,75	3,75	Hp	3,35	5	5	3,35	5	5	
Nylon filter motor	Kw	0,55	0,55	0,55	0,55	0,55	0,55	Hp	0,75	0,75	0,75	0,75	0,75	0,75	
Vacuum Pump Motor	Kw	0,55	0,55	0,55	0,55	0,55	0,55	Hp	0,5	0,89	0,89	0,5	0,89	0,89	
Drying Heating elements	Kw	9	9	12	9	9	12	Kw	-	-	-	-	-	-	
Still electric elements	Kw	10,5	9	12	10,5	9	12	Kw	-	-	-	-	-	-	
Steam Boiler Working	BHP	2,5	2,5	3	2,5	2,5	3	BHP	2,5	3	3	2,5	3	3	
CONNECTIONS SUPPLY															
Compressed air inlet	ø	1/4"	1/4"	1/4"	1/4"	1/4"	1/4"	ø	1/4"	1/4"	1/4"	1/4"	1/4"	1/4"	
Water inlet	ø	3/4"	3/4"	3/4"	3/4"	3/4"	3/4"	ø	3/4"	3/4"	3/4"	3/4"	3/4"	3/4"	
Water outlet	ø	3/4"	3/4"	3/4"	3/4"	3/4"	3/4"	ø	3/4"	3/4"	3/4"	3/4"	3/4"	3/4"	
Steam Still and heater inlet	ø	1/2"	1/2"	1/2"	1/2"	1/2"	1/2"	ø	1/2"	1/2"	1/2"	1/2"	1/2"	1/2"	
Condensat Still and heater outlet	ø	1/2"	1/2"	1/2"	1/2"	1/2"	1/2"	ø	1/2"	1/2"	1/2"	1/2"	1/2"	1/2"	
MACHINES DIMENSIONS															
Width front Machine	mm	1560	1800	2000	1560	1800	2000	inches	61,4	71	79	61,4	71	79	
Depth	mm	1510	1650	1900	1510	1650	1900	inches	59,4	65	75	59,4	65	75	
Height Without Fan	mm	2065	2035	2115	2065	2035	2115	inches	81,3	80	83	81,3	80	83	
Height With Fan	mm	2125	2170	2300	2125	2170	2300	inches	84	85	91	84	85	91	
MACHINES WEIGHTS															
Empty machine weight	Kg	1320	1650	2070	1340	1680	2100	lbs	2910	3634	4564	2910	3634	4564	
Machine weight with solvent	Kg	1536	1935	2397	1650	2096	2578	lbs	3386	4266	5284	3386	4266	5284	
Static charge on the floor with solvent	Kg/ mt ²	729	717	685	783	776	737	lbs/ft ²	149	147	140	149	147	140	
Dynamic charge on the floor (+10%)	Kg/ mt ²	1070	1095	1118	1130	1137	1174	lbs/ft ²	219	224	229	219	224	229	
Packaged machine weight	Kg	1410	1750	2170	1430	1780	2200	lbs	3109	3860	4784	3109	3860	4784	
Noise Level	dB (A)	70	70	70	70	70	70	dB (A)	70	70	70	70	70	70	

* POWER CHANGES ACCORDING TO THE USE OF THE MACHINE



via Verde 7/D 40012 Calderara di Reno
 tel +39 051 6814820
 Fax +39 051 6814322
 sales@realstar.it
 www.realstar.it